



A+SERIES™

A+P Penthouse Unit



A+P IS A ROOF-MOUNTED, INSULATED PENTHOUSE AIR COOLER FOR INDUSTRIAL APPLICATIONS

Colmac Coil's A+P Penthouse unit is designed for maximum versatility and efficiency. With availability for ammonia, freon, CO2 and glycol systems and capacities from 5 - 90TR, A+P is the perfect fit for cold storage warehouses and food processing plants.

Choose from three standard configurations:

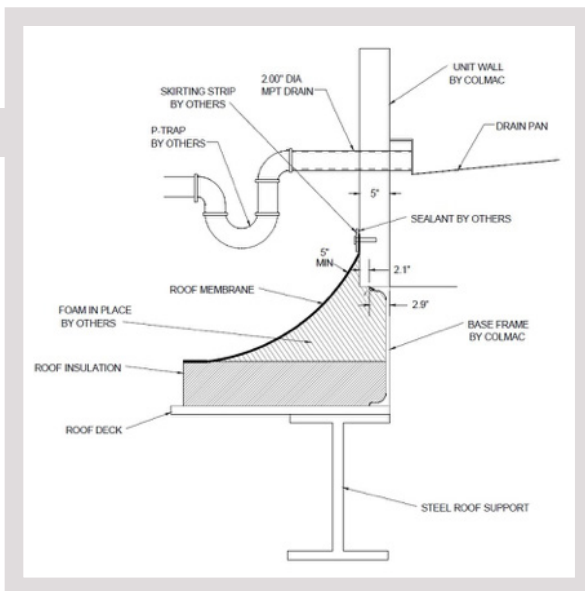
- ▶ **Complete unit**
- ▶ **Coil, Base, Fans, Structural Frame**
- ▶ **Coil with Drainpan and Legs Only**

"The Heat Transfer Experts"



Base Construction

- Structural steel perimeter frame
- G235 galvanized metal bracing and support structure
- Fully primed and painted frame members
- Integrated welded lifting brackets
- Standard seismic design complies with SDC=D, Occupancy design=11, Site Class=D
- Standard design withstands 90mph wind speed
- Optional increased seismic and wind speed available



Base Features

- Standard design for installation on flat roof
- Optional pitched base up to 2" in 10'
 - Pitched along length or width
 - Ships installed on base of unit
- Roof to panel interface by others in field
- Side drain connection to roof
- Optional drain into building



Support Frame

- G235 galvanized metal interior support frame
- Access doors standard on both sides of unit, maximized based on unit height
- Galvanized steel grating on both sides of coil standard



Interior Features

- Interior LED lighting
- Individual light switches inside each door
- 120 V service outlets on both sides of coil
- Full height access on both sides of coil
- Door heat trace standard
- Door safety interlocks optional
- Individual removable grating sections above each fan for motor access
- Motor hoist arm movable between each fan bay
- Traction strip on smooth metal floor surfaces
- Electrical runs on interior of unit in EMT sealed conduit



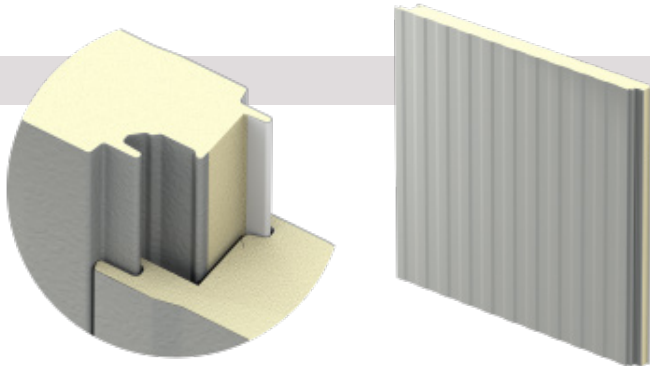
Tube Axial Fans

- 1 to 10 HP premium efficiency motors
- Bench style mount motor
- Top mount fan for easy maintenance access to fan and motor from unit interior
- Round discharge flange for duct extension or plenum mounting standard



Roof Construction

- Full welded PVC roof membrane (vs. EPDM)
- Mechanically fastened at perimeter and intermediate points
- Termination bar and edge trim around perimeter of roof
- Full triple seal vapor barrier under roof membrane
- Optional increased roof panel thickness/R-value available
- Optional sloped roof available



Insulated Panel Construction

- Foamed-in-place polyurethane foam panels
 - Assembled with offset tongue and groove for thermal break
 - Utilizes concealed fasteners to eliminate thermal short circuits
 - All panel joints/corners employ triple seal process to ensure full vapor barrier seal
- Interior and exterior surface is embossed 26GA galvanized steel
 - Interior polyester coating in igloo white
 - Exterior silicone modified polyester coating in winter white
- 5" R-41 standard panel thickness
- 6" R-49 optional roof panel thickness
- Optional color matched panels available



Insulated Doors

- Hercules in-fitting door with frame standard
- Exterior overlap door seal with door heat trace
 - Fully powder coated hardware
 - Metal wrapped composite frames and jamb (no wood)
- Optional: Frank in-fitting door with frame
 - Exterior overlap door seal with door and jamb heat trace
 - Increased R value
 - Rotary latch with SST and composite hardware
 - Extruded aluminum frames and PVC jamb (no wood)



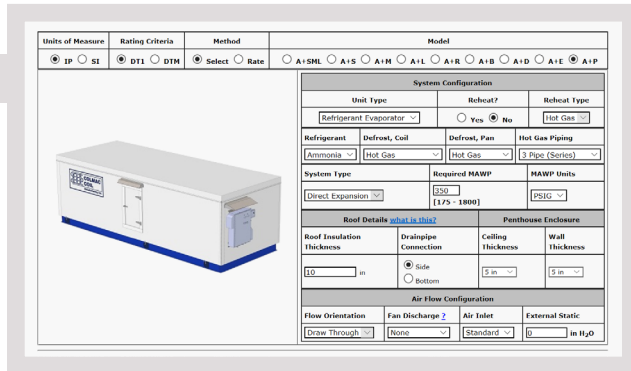
Electric Features

- Motor control panel
 - NEMA 4 enclosure standard
 - Remote and local operation
 - Optional VFD
- Weather hoods standard
- EEV control for ADX system
 - Separate enclosure and disconnect for low voltage 24V
- Motor and service circuits wired to terminal strips standard
- Customized UL508 listed control panels available for all units
 - Single point wiring optional
 - Remote and local control
 - Optional VFD



Additional Options

- Ammonia detection system
- 90-degree duct extensions
- Stainless steel interior
- Washdown duty components

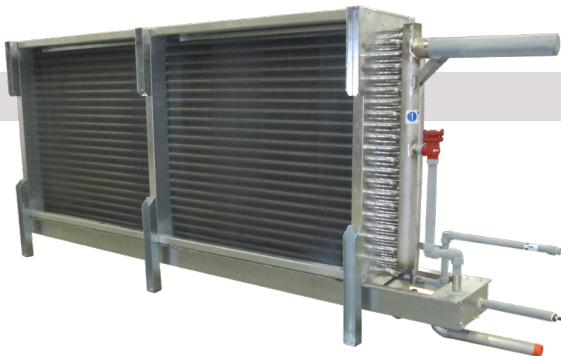


| Units of Measure | Rating Criteria | Method | Model |
|--------------------------------------------------------------|----------------------------------------------------------------|--------------------------------------------------------------------|----------------------------------------------------------------------------------------------------------------------------------------------------------------------------------------------------------------------------------------------------------------|
| <input checked="" type="radio"/> IP <input type="radio"/> SI | <input checked="" type="radio"/> DT1 <input type="radio"/> DTM | <input checked="" type="radio"/> Select <input type="radio"/> Rate | <input type="radio"/> A-SHL <input type="radio"/> A-15 <input type="radio"/> A-1M <input type="radio"/> A-1L <input type="radio"/> A-1R <input type="radio"/> A-1B <input type="radio"/> A-1D <input type="radio"/> A-1E <input checked="" type="radio"/> A-1P |

| System Configuration | | | |
|---------------------------|--------------------------------------------------------------------|---------------------|-----------------------|
| Unit Type | Reheat? | Reheat Type | |
| Refrigerant Evaporator | <input type="radio"/> Yes <input checked="" type="radio"/> No | Hot Gas | |
| Refrigerant | Defrost, Coil | Defrost, Pan | Hot Gas Piping |
| Ammonia | Hot Gas | Hot Gas | S Pipe (Series) |
| System Type | Required MAWP | MAWP Units | |
| Direct Expansion | ESD (1.75 - 1.800) | PSIG | |
| Roof Details | | Penthouse Enclosure | |
| Roof Insulation Thickness | Drainpipe Connection | Ceiling Thickness | Wall Thickness |
| 1.0 in | <input type="radio"/> Side <input checked="" type="radio"/> Bottom | 5 in | 5 in |
| Air Flow Configuration | | | |
| Flow Orientation | Fan Discharge 2 | Air Inlet | External Static |
| Draw Through | Upward | Standard | 0 in H ₂ O |

Selection Software

- A+Pro software now allows you to select or rate A+P penthouse evaporators to match your project requirements and provides you with complete performance, dimensional, electrical, and installation information.
- A+P selections can be sorted and prioritized in order of:
 - Lower first cost
 - Lowest operating cost (Fan kW/TR)
 - Smallest refrigerant charge
 - Lightest weight
 - Lowest noise level



Warranty

- B31.5 standard 5-year warranty on all pressure bearing elements (tubes, headers, connections, weld joints) in our stainless steel ammonia evaporators
- Standard 2-year warranty for all other parts



Shipping

- All units designed to ship fully assembled
- Over width as needed up to 144"
- Below 102" tall on a standard flatbed
- Between 102" and 120" tall on step deck flat bed
- Above 120" tall on double drop flat bed
- Freight quotes in A+Pro



Quality Products From Colmac Coil



Heating and Cooling Coils



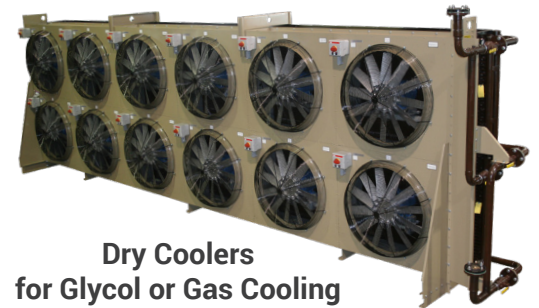
Heat Pipes for Heat Recovery



A+Series™ Air Coolers



Air Cooled Condensers



Dry Coolers
for Glycol or Gas Cooling

www.colmaccoil.com

"The Heat Transfer Experts"

North American Headquarters

Colmac Coil Manufacturing, Inc.
370 N. Lincoln St. | P.O. Box 571
Colville, WA 99114 | USA
+1.509.684.2595 | +1.800.845.6778

Midwest US Manufacturing

Colmac Coil Midwest
350 Baltimore Dr. | Paxton, IL 60957 | USA



CRN



CSA

ASME Sec. VIII, Canadian Registration Number, UL508, Canadian Standards Association

©2019 Colmac Coil Manufacturing, Inc.

ENG00020584(0) 12.18.19